



£500 PCM

Waterloo Road Blackpool

Flat | 2 Bedrooms | 1 Bathroom

01253 628000



www.willowsestates.co.uk



Step Inside

Key Features

- UPVC DOUBLE GLAZING
- TWO BEDROOMS
- GROUND FLOOR
- CENTRAL LOCATION

Property Description

Available Immediately Willows Estates are delighted to offer to LET this TWO BEDROOM ground floor flat, briefly comprising of two bedrooms, spacious lounge, kitchen, and bathroom. The property is conveniently located close to all local amenities.

Main Particulars

COMMUNAL ENTRANCE HALL

Communal hallway leading to a private entrance door.

LOUNGE 15 x 10'4 (4.6m x 3.19m) Approx.

As you enter the lounge you will find a UPVC double glazed bay window to the front aspect, an economy 7 heater, television point, telephone point, and wood effect laminate flooring.

KITCHEN 12'7 x 5'5 (3.9m x 1.68m) Approx.

A bright and welcoming kitchen with UPVC double glazed window to the front aspect, a range of matching wall and base units with complementary work surface, tiled splashback, inset stainless steel sink unit, integrated electric oven with electric hob and extractor hood over, plumbed for washing machine and tiled effect vinyl flooring.

BEDROOM ONE 11'3 x 10'4 (3.45m x 3.19m) Approx.

A well-presented room with UPVC double glazed window to the rear aspect, economy 7 heater, television point, and wood laminate flooring.

BEDROOM TWO 8'8 x 7'2 (2.7m x 2.2m) Approx.

A well-presented room with UPVC double glazed window to the rear aspect, electric panel heater, television point, and wood laminate flooring.

BATHROOM 6'2 x 5'5 (1.9m x 1.7m) Approx.

As you enter the bathroom you will find a UPVC double glazed opaque window to the side aspect, heated towel rail, paneled bath with mixer tap shower, tiled walls, pedestal wash hand basin, low flush WC, and tiled effect vinyl flooring.

Landlords! More properties wanted!!! Willows estates require similar properties to meet current demand. If you have a property to let, please call us on 01253 628000/ 01253 821575. We look forward to hearing from you.

GENERAL

One Month's Rent in advance (£500.00)

Deposit (£500.00) to be put into a secure deposit scheme.

OFFER PROCEDURE

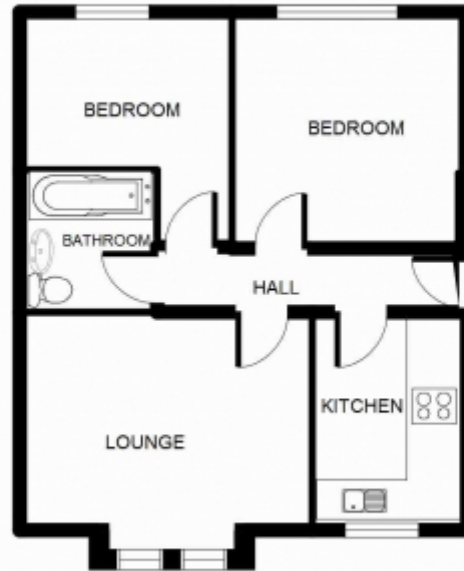
You will be required to give financial information in order to verify your position before we can recommend you to the landlord.

VIEWING

By prior appointment with the Landlords agent. Willows Estates. Telephone 01253 628000



WATERLOO ROAD, BLACKPOOL FY4 4BL
GROUND FLOOR 2 BEDROOM APARTMENT



This floorplan is for illustrative purposes only and the location of doors, windows and other items are approximate.

Agents notes: All measurements are approximate and for general guidance only and whilst every attempt has been made to ensure accuracy, they must not be relied on. The fixtures, fittings and appliances referred to have not been tested and therefore no guarantee can be given that they are in working order. Internal photographs are reproduced for general information and it must not be inferred that any item shown is included with the property. Copyright © 2024 8751655 Registered Office: , 53, Central Drive, Blackpool, Lancashire, FY1 5DS

Telephone: 01253 628000



www.willowsestates.co.uk