



£95 Per Week

CHELTENHAM ROAD BLACKPOOL

Flat | 1 Bedroom | 1 Bathroom

01253 628000



www.willowsestates.co.uk



Step Inside

Key Features

- DOUBLE BEDROOM
- SPACIOUS ROOMS
- MODERN KITCHEN
- OFF ROAD PARKING
- FIRST FLOOR
UNFURNISHED

Property Description

Willows estates are pleased to present this spacious one bedroom First floor flat. Located within walking distance to local amenities and public transport routes. The property briefly comprises of double bedroom, lounge, modern fitted kitchen and shower suite.

Main Particulars

Communal Entrance/Stairs leading to:-

Private entrance door.

Lounge: 2.91m x 3.8m 9'6" x 12'5" Approx.

Double glazed window to front aspect, electric heating,

Bedroom one: 3.2m x 2.4m 10'5" x 7'10" Approx.

Double glazed window to rear aspect, electric heating, wash hand basin

Kitchen Area: 2.13m x 2.88m 6'11" x 9'5" Approx.

Fitted with a range of modern eye and base units with complementary work surface, inset stainless steel sink unit, tiled splashbacks, integrated electric oven and four ring electric hob with stainless steel extractor hood above, front aspect double glazed window, plumbed for washing machine, electric panel heating, and cushion flooring.

Shower room: 1.6m x 1.96m 5'2" x 6'1" Approx.

Modern step-in shower cubicle, low-level WC.

Exterior:

Off-road parking to the front of the property.

You will be required to give financial information in order to verify your position before we can recommend you to the landlord

VIEWING

By prior appointment with the Landlords agent. Willows Estates. Telephone: (01253) 628000.

DISCLAIMER

These particulars, whilst believed to be accurate are set out as a general guideline and do not constitute any part of an offer or contract. Indenting Tenants should not

rely on them as statements of.

FREE VALUATION

Landlords! If you would like to obtain an independent and completely free market appraisal, please contact Willows Estates. Telephone (01253 628000)

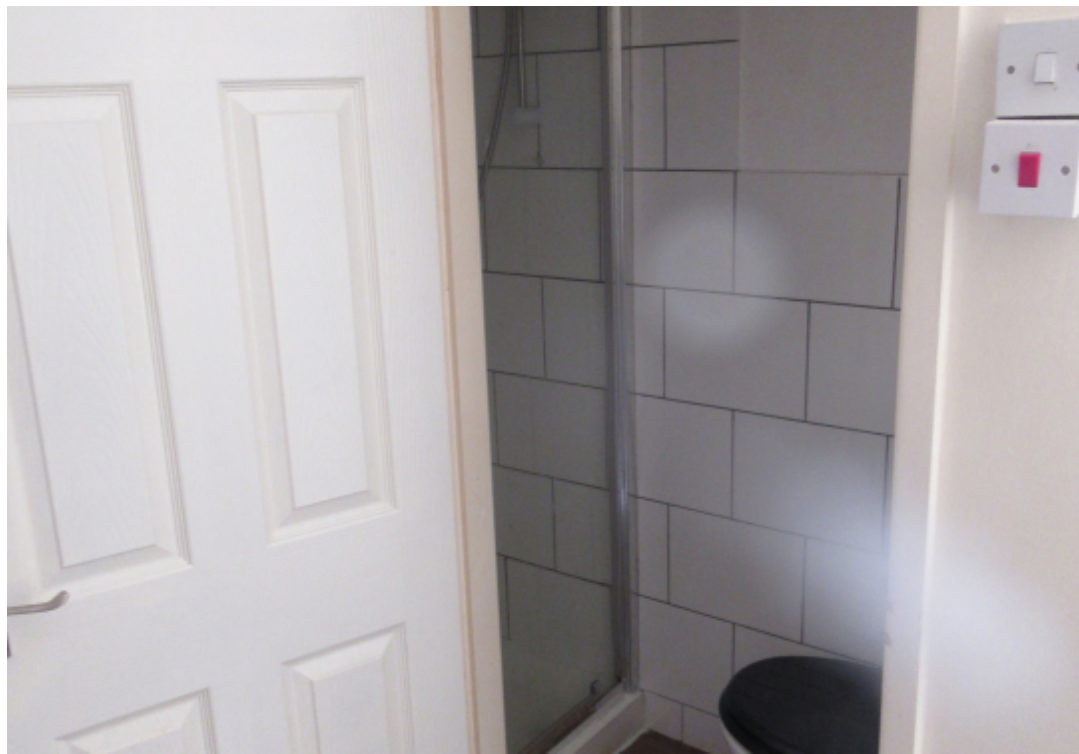




Image not found

This floorplan is for illustrative purposes only and the location of doors, windows and other items are approximate.

Telephone: 01253 628000



www.willowsestates.co.uk